

STARLIGHT
GLASS
WALL
SYSTEMS

STARLINE

STARLINE

Single Glazed Glass Wall System

Designed with top and bottom frame profiles, Vitrum allows maximum light to spaces through transparent joints between glass panels. With its affordable European design, single glazed Vitrum provides a minimalist but chic look to your spaces.



System Features

- Designed with glass-to-glass butt joints; there is no need for vertical profiles
- Slim anodized aluminum frame with custom finish options
- Custom hardware options
- Easy to modify during on-site installation
- Angled wall options
- Concealed clips and fasteners allow quick and easy installation as well as savings in project costs and schedule
- Framed glass or wood door options for maximum sound insulation





System Thickness:	1 5/8"
Panel Width:	Up to 42"
Panel Height:	12' (max)
Leveling Tolerance:	Upto 13/16"
Finish Options:	Anodized aluminum or RAL colors
Glazing:	3/8" to 1/2" laminated or tempered glass with optional back-paint, film or graphics



Door Panels

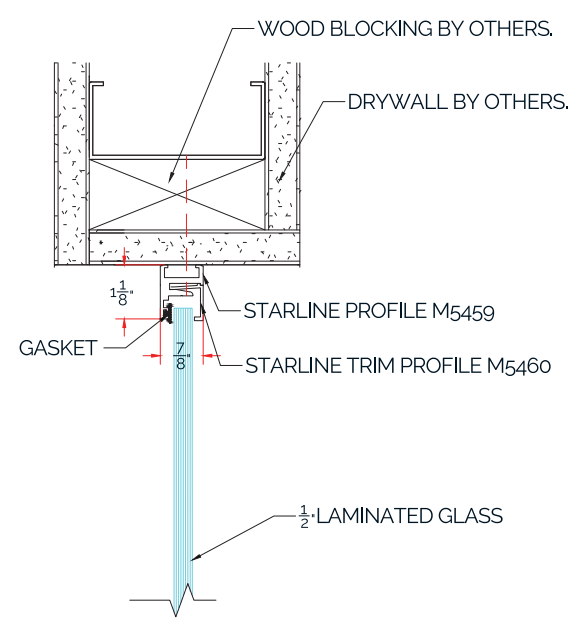
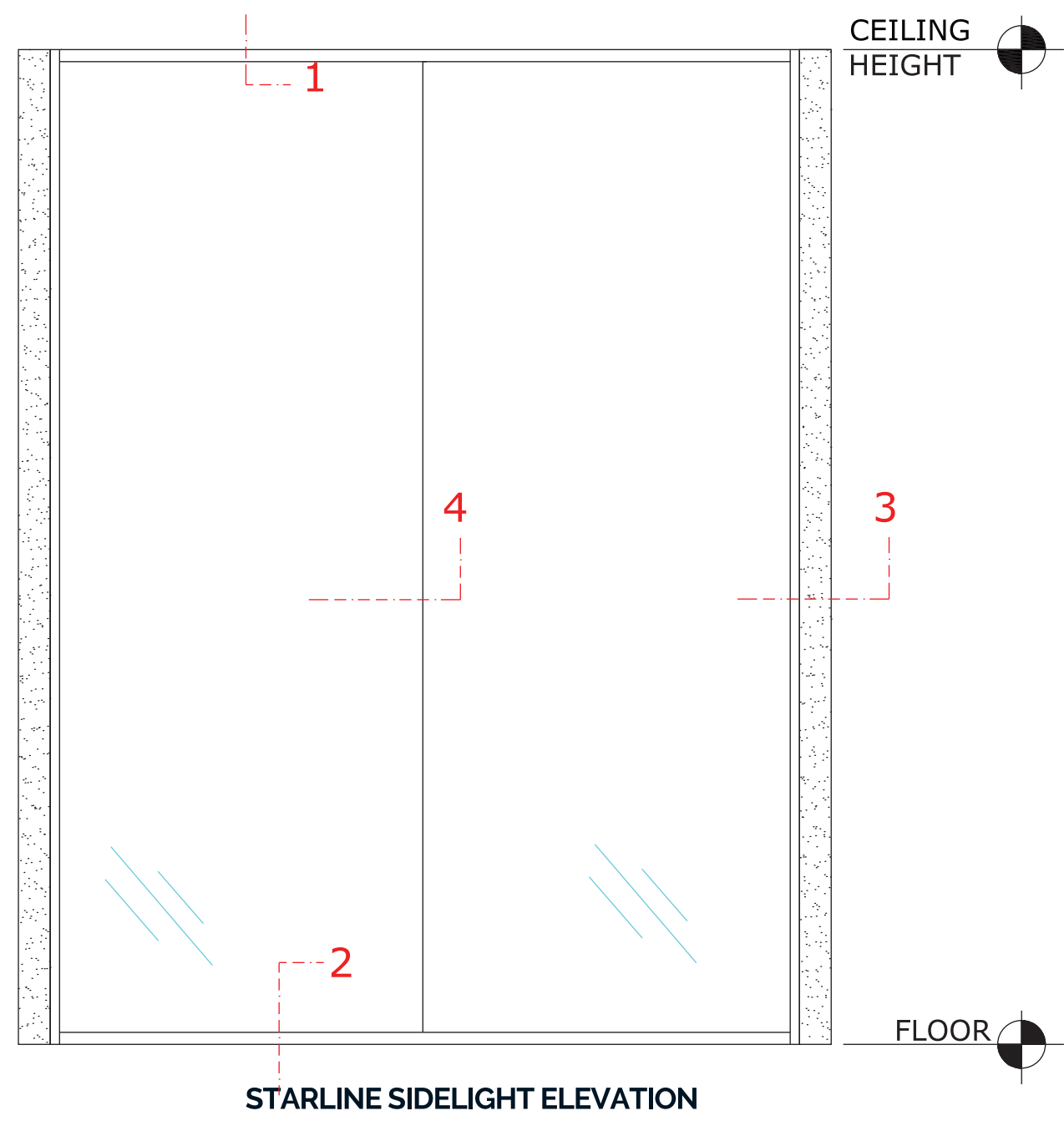
- Single or double glazed doors with aluminum frame
- Frameless glass doors
- Wood, laminate doors

Door Hardware

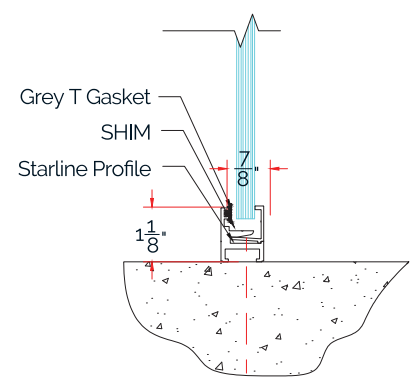
- Various pull, handle and lock options (lock and latch)
- Self closing and hold-open functions built into glass door hinges

STARLINE TECHNICAL DETAILS

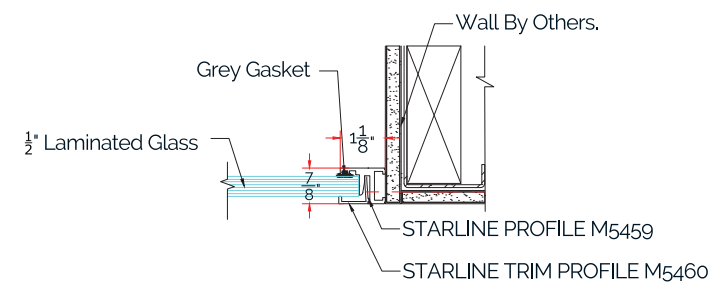
STARLIGHT



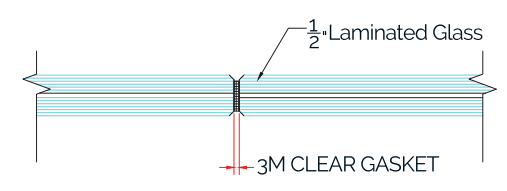
1-STARLINE DEMOUNTABLE SIDELIGHT TOP DETAIL
SCALE: 3" = 1'-0"



2-STARLINE DEMOUNTABLE SIDELIGHT BOTTOM DETAIL
SCALE: 3" = 1'-0"



3-STARLINE SIDELIGHT FRAME
SCALE: 2 $\frac{1}{2}$ " = 1'-0"



4- GLASS TO GLASS JOINT DETAIL
SCALE: 2 $\frac{1}{2}$ " = 1'-0"



STARLIGHT
GLASS WALL SYSTEMS

www.starlight-us.com

13850 McLearen Rd. Herndon, VA 20171 P: 703 686 4913