

STARLIGHT  
GLASS  
WALL  
SYSTEMS

---

**AKUSTIK**

# AKUSTİK

## Double Pane Glass Wall System

Designed for spaces that require sound insulation, our double glazed Vitrum Duo gives you the ability to create elegant transparent environments while maintaining sound privacy. Engineered to offer multiple configurations, Vitrum Duo combines functionality, performance and elegance.

### System Features

- Sound insulation values up to 48 STC
- Ideal for noise sensitive areas such as conference and collaboration rooms
- Slim anodized aluminum frame with custom finish options
- Custom hardware and glazing options
- Easy to modify during on-site installation
- Framed glass or wood door options for maximum sound insulation
- Concealed clips and fasteners allow quick and easy installation as well as savings in project costs and scheduling





System Thickness:	1 5/8"
Panel Width:	42"
Panel Height:	10'
Leveling Tolerance:	Upto 13/16"
Finish Options:	Anodized aluminum or RAL colors wood finish
Glazing:	3/8" to 1/2" laminated or tempered glass with optional back-paint, film or graphics



### Door Panels

- Single or double glazed doors with aluminum frame
- Frameless glass doors
- Wood, laminate doors

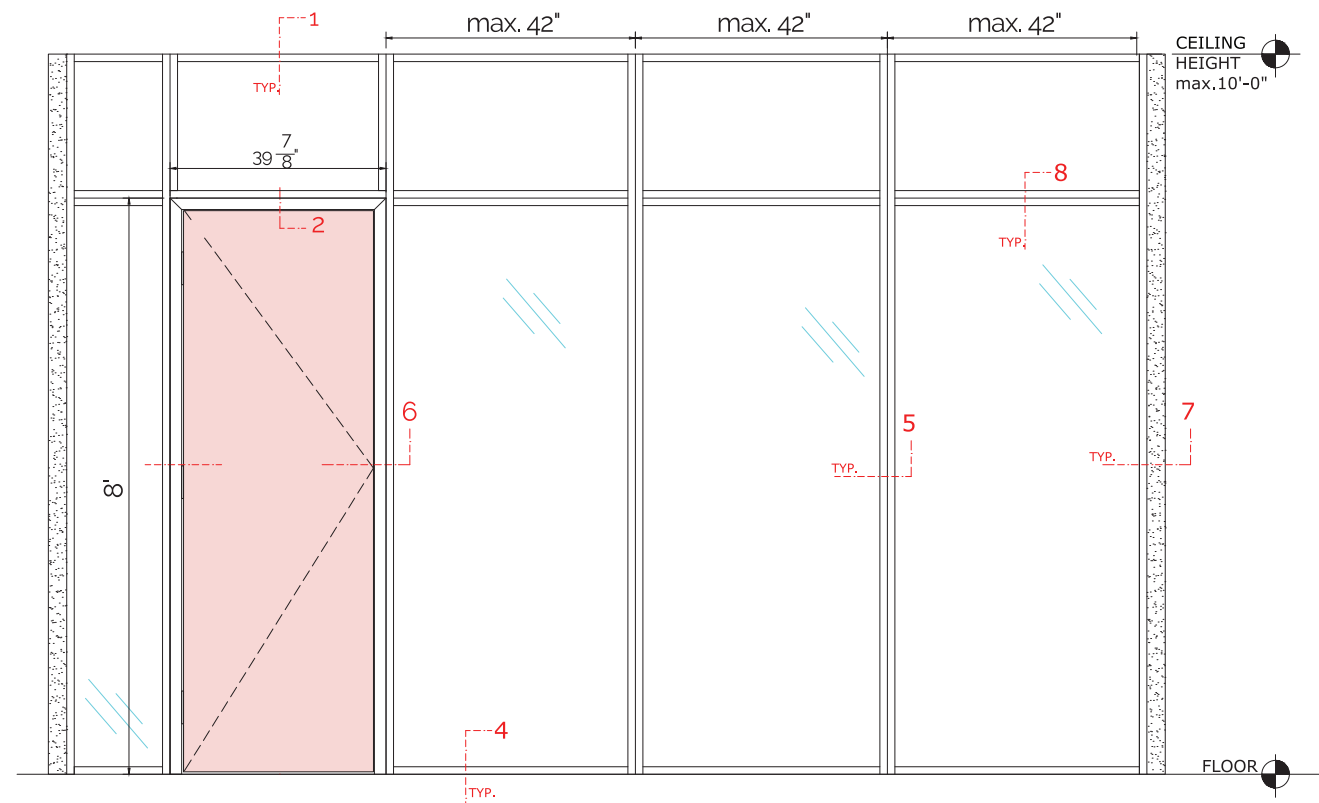
### Door Hardware

- Various pull, handle and lock options (lock and latch)
- Self closing and hold-open functions built into glass door hinges





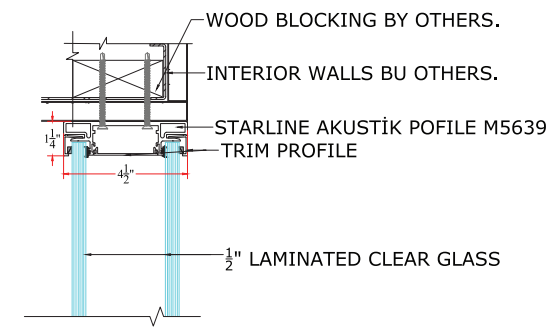
ST★RLIGHT



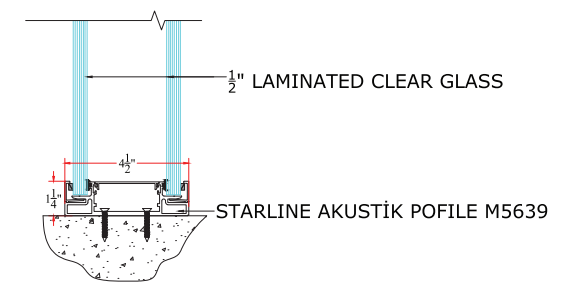
## STARLINE AKUSTİK SYSTEM WITH HINGE DOOR ELEVATION

SCALE :  $\frac{3}{8}" = 1'-0"$

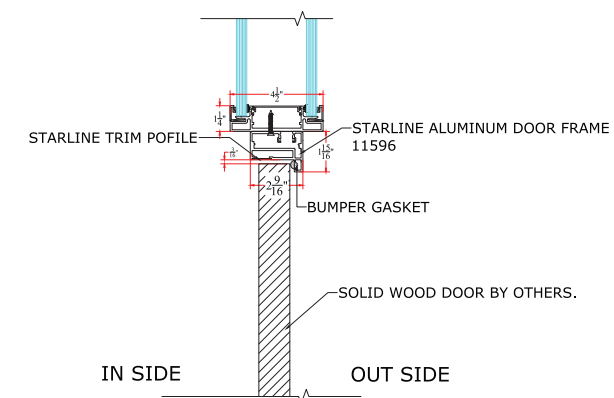
System:	Starline Akustik Aluminum Partition System.
Akustik Profile:	Starline # M5639
Akustik Profile Trim:	Starline #5638
Glass:	½" Laminated Double Glazed.
Glass Configuration:	¼" clear glass + 0.060" PVB Interlayer + ¼" clear glass.
Door Frame Profile:	Starline # 11596
Door Frame Profile Trim:	Starline # R9397



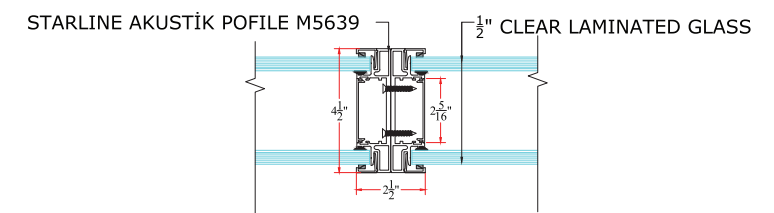
### 1-STARLINE AKUSTİK SYSTEM TOP DETAIL



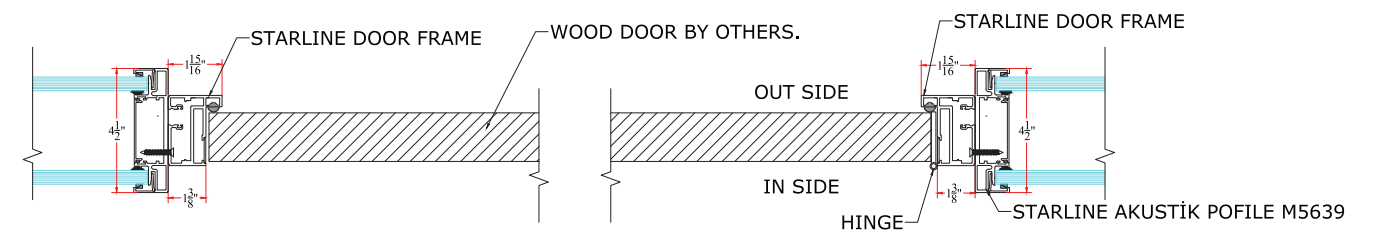
#### 4-STARLINE AKUSTİK SYSTEM BOTTOM SECTION DETAIL



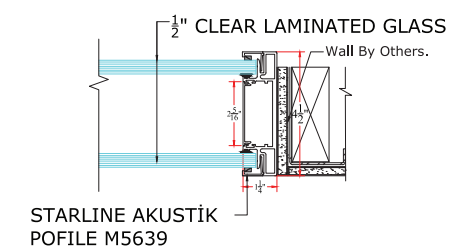
### 2-STARLINE SWING HINGE DOOR WITH TRANSOM SECTION DETAIL



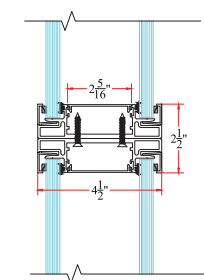
### 5-STARLINE AKUSTİK SYSTEM VERTICAL JOINT DETAIL



### 6-STARLINE SWING HINGE DOOR AND AKUSTİK SIDELITE JOINT DETAIL



### 7-STARLINE AKUSTİK SIDELIGHT JAMB DETAIL



### 8-STARLINE AKUSTİK SYSTEM HORIZONTAL JOINT DETAIL



**STARLIGHT**  
**GLASS WALL SYSTEMS**

[www.starlight-us.com](http://www.starlight-us.com)

13850 McLearen Rd. Herndon, VA 20171 P: 703 686 4913